

EST . 1958

RESIGLAS
Professional



310



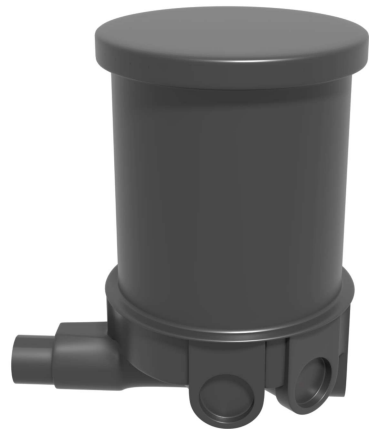
510



610



710



810



910

Our **Polyethylene Manhole** (alternatively called inspection chamber, utility hole, cable chamber, maintenance hole, access chamber, sewer hole or confined space) is the top opening to an underground utility vault used to house an access point for making connections, inspection, valve adjustments or performing maintenance on underground and buried public utility and other services including sewers, telephone, electricity, storm drains and other services. Our polyethylene manhole will also contribute to the protection of the environment and your absorption pit.

POLYETHYLENE PRODUCTS

MANHOLES

310 – 910

- Diameter of cover: 540mm
- Inlet: 5 inlet (2 x 45° , 2 x 90° , 1 x 180°)
- Outlet: Diameter 110mm

Benefits

Manholes are required in domestic, commercial and municipal sewerage networks.

Some of their benefits are listed below:

- Easy storage on site
Due to the light weight of the polyethylene manhole/inspection chamber, storage on site is extremely easy by stacking them up vertically, hence saving space.
- Extremely fast installation
The significant lower weight of the polyethylene manhole/inspection chamber compared to concrete ones enables easy installation.
- No space constraint issue
Polyethylene manhole/inspection chamber can be easily lifted by hand, hence has excellent workability at space constraint issue.
- Environmentally friendly
Our manhole/inspection chambers are made up of polyethylene.
- Lower maintenance cost
Once installed, polyethylene manhole/inspection chamber do not require maintenance for a very long time; this is due to the extremely smooth internal surface which ensures self-cleaning effect.
- High chemical resistance and corrosion resistance
The polyethylene manhole/inspection chamber has exceptional long lifespan due to excellent chemical and abrasion resistance of the material.

NON-CONTRACTUAL IMAGES

MADE IN MAURITIUS